



3337 HART 2-х проводной температурный преобразователь

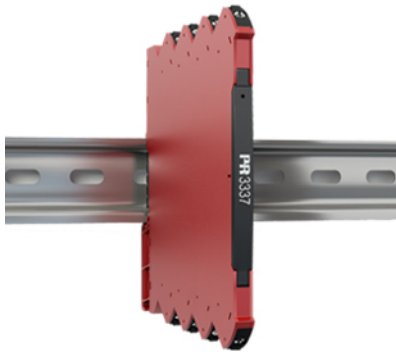
Технические характеристики

Архангельск (8182)63-90-72
Астана (7172)727-132
Астрахань (8512)99-46-04
Барнаул (3852)73-04-60
Белгород (4722)40-23-64
Брянск (4832)59-03-52
Владивосток (423)249-28-31
Волгоград (844)278-03-48
Вологда (8172)26-41-59
Воронеж (473)204-51-73
Екатеринбург (343)384-55-89
Иваново (4932)77-34-06
Ижевск (3412)26-03-58
Казань (843)206-01-48

Калининград (4012)72-03-81
Калуга (4842)92-23-67
Кемерово (3842)65-04-62
Киров (8332)68-02-04
Краснодар (861)203-40-90
Красноярск (391)204-63-61
Курск (4712)77-13-04
Липецк (4742)52-20-81
Магнитогорск (3519)55-03-13
Москва (495)268-04-70
Мурманск (8152)59-64-93
Набережные Челны (8552)20-53-41
Нижний Новгород (831)429-08-12
Новокузнецк (3843)20-46-81

Новосибирск (383)227-86-73
Омск (3812)21-46-40
Орел (4862)44-53-42
Оренбург (3532)37-68-04
Пенза (8412)22-31-16
Пермь (342)205-81-47
Ростов-на-Дону (863)308-18-15
Рязань (4912)46-61-64
Самара (846)206-03-16
Санкт-Петербург (812)309-46-40
Саратов (845)249-38-78
Севастополь (8692)22-31-93
Симферополь (3652)67-13-56
Смоленск (4812)29-41-54

Сочи (862)225-72-31
Ставрополь (8652)20-65-13
Сургут (3462)77-98-35
Тверь (4822)63-31-35
Томск (3822)98-41-53
Тула (4872)74-02-29
Тюмень (3452)66-21-18
Ульяновск (8422)24-23-59
Уфа (347)229-48-12
Хабаровск (4212)92-98-04
Челябинск (351)202-03-61
Череповец (8202)49-02-64
Ярославль (4852)69-52-93



HART temperature converter, loop-powered

3337

- HART® 7 revision protocol enables extended programming
- Slimline housing of 6 mm
- Excellent EMC performance
- Pre-calibrated temperature ranges selectable via DIP-switches



Application

- The 3337 temperature converter measures a standard Pt100, TC J and K temperature sensor, and provides an isolated passive analog current and HART® signal output.
- High 2 port isolation provides surge suppression and protects the control system from transients and noise.
- The 3337 can be mounted in the safe area or in Zone 2 / Division 2 areas.
- Approved for marine applications.

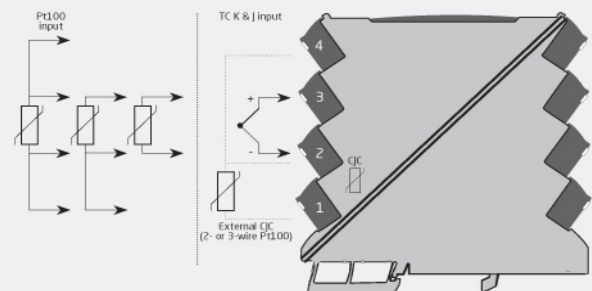
Technical characteristics

- Flexibly loop powered by 6.2...35 VDC via connectors.
- A 60 ms fast response time with simultaneous sensor error detection when selected.
- Selectable internal/external CJC.
- Excellent conversion accuracy in all available ranges, better than 0.05% of selected range input.
- Meeting the NAMUR NE21 recommendations, the 3337 provides top measurement performance in harsh EMC environments.
- The device meets the NAMUR NE43 standard defining out of range and sensor error output values.
- All terminals are protected against overvoltage and polarity error.
- High galvanic isolation of 2.5 kVAC.
- Excellent signal/noise ratio of > 60 dB.

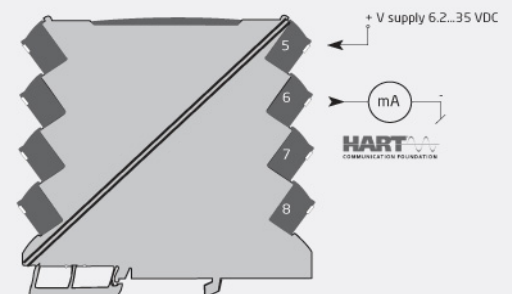
Mounting / installation / programming

- Selectable HART® mode with HART® 7 revision protocol enables extended device programming.
- Selectable DIP-mode for easy configuration of more than 1000 factory calibrated measurement ranges with HART® read only feature.
- The narrow 6 mm housing allows up to 165 units to be mounted per meter of DIN rail, without any air gap between units.
- Wide ambient temperature range of -25...+70°C..

Connections



Safe Area or
Zone 2 & Cl. 1, Div. 2, gr. A-D



Order:

Type
3337

Environmental Conditions

Specifications range.....	-25°C to +70°C
Storage temperature.....	-40°C to +85°C
Calibration temperature.....	20...28°C
Relative humidity.....	< 95% RH (non-cond.)
Protection degree.....	IP20
Installation in.....	Pollution degree 2 & measurement / overvoltage cat. II

Mechanical specifications

Dimensions (HxWxD).....	113 x 6.1 x 115 mm
Weight approx.....	70 g
DIN rail type.....	DIN EN 60715/35 mm
Wire size.....	0.13 x 2.5 mm ² / AWG 26...12 stranded wire
Screw terminal torque.....	0.5 Nm

Common specifications

Supply voltage.....	6.2...35 VDC
Voltage drop.....	6.2 VDC
Max. power consumption.....	0.7 W
Isolation voltage, test.....	2.5 kVAC (reinforced)
Isolation voltage, working.....	300 VAC/250 VAC (I.S.)
Signal / noise ratio.....	> 60 dB
Response time, HART® mode.....	60 ms...60 s, programmable
Response time, DIP mode.....	< 60 ms
EMC immunity influence.....	< ±0.5% of sel. range
Extended EMC immunity: NAMUR NE 21, A criterion, burst.....	< ±1% of sel. range
Incorrect DIP-switch setting identification.....	3.5 mA

Input specifications

Temperature range.....	-200...+850°C
Accuracy, RTD.....	Better than 0.05% of selected range or 0.1°C
Sensor current, RTD.....	< 150 µA
Sensor cable resistance, RTD.....	< 50 Ω per wire
Effect of sensor cable resistance (3-/4-wire), RTD.....	< 0.002 Ω / Ω
Sensor error detection, RTD.....	Yes - selectable via DIP-switch
Broken sensor detection.....	> 800 Ω
Shorted sensor detection.....	< 18 Ω
Temperature range, TC J.....	-100...+1200°C
Temperature range, TC K.....	-180...+1372°C
Accuracy, TC.....	Better than 0.05% of selected range or 0.5°C
Sensor cable resistance, TC.....	< 5 kΩ per wire
Cold junction compensation (CJC): Accuracy @ external Pt100 input.....	Better than ±0.15°C
Cold junction compensation (CJC): Accuracy @ internal CJC.....	Better than ±2.5°C
Open Thermocouple detection.....	Yes - selectable via DIP-switch
Internal CJC error detection.....	Yes
External CJC error detection.....	Yes - selectable via DIP-switch

Output specifications

Programmable signal ranges.....	4...20 and 20...4 mA
Range limits.....	3.8...20.5 mA NAMUR NE43
Sensor error indication.....	3.5 mA or 23 mA / acc. to NAMUR NE43 or OFF
Load resistance, current output.....	≤ (V _{supply} - 6.2) / 0.023 [Ω]
Load stability, current output.....	≤0.01% of span/100 Ω
HART® protocol revisions.....	HART® 7

Approvals

EMC.....	EN 61326-1
LVD.....	EN 61010-1
ATEX.....	KEMA 10ATEX0147 X
IECEx.....	KEM 10.0068X
FM.....	3041043-C
DNV Marine.....	Stand. f. Certific. No. 2.4
GL.....	V1-7-2
GOST R.....	Yes
UL.....	UL 61010-1

По вопросам продажи и поддержки обращайтесь:

Архангельск (8182)63-90-72
Астана (7172)727-132
Астрахань (8512)99-46-04
Барнаул (3852)73-04-60
Белгород (4722)40-23-64
Брянск (4832)59-03-52
Владивосток (423)249-28-31
Волгоград (844)278-03-48
Вологда (8172)26-41-59
Воронеж (473)204-51-73
Екатеринбург (343)384-55-89
Иваново (4932)77-34-06
Ижевск (3412)26-03-58
Казань (843)206-01-48

Калининград (4012)72-03-81
Калуга (4842)92-23-67
Кемерово (3842)65-04-62
Киров (8332)68-02-04
Краснодар (861)203-40-90
Красноярск (391)204-63-61
Курск (4712)77-13-04
Липецк (4742)52-20-81
Магнитогорск (3519)55-03-13
Москва (495)268-04-70
Мурманск (8152)59-64-93
Набережные Челны (8552)20-53-41
Нижний Новгород (831)429-08-12
Новокузнецк (3843)20-46-81

Новосибирск (383)227-86-73
Омск (3812)21-46-40
Орел (4862)44-53-42
Оренбург (3532)37-68-04
Пенза (8412)22-31-16
Пермь (342)205-81-47
Ростов-на-Дону (863)308-18-15
Рязань (4912)46-61-64
Самара (846)206-03-16
Санкт-Петербург (812)309-46-40
Саратов (845)249-38-78
Севастополь (8692)22-31-93
Симферополь (3652)67-13-56
Смоленск (4812)29-41-54

Сочи (862)225-72-31
Ставрополь (8652)20-65-13
Сургут (3462)77-98-35
Тверь (4822)63-31-35
Томск (3822)98-41-53
Тула (4872)74-02-29
Тюмень (3452)66-21-18
Ульяновск (8422)24-23-59
Уфа (347)229-48-12
Хабаровск (4212)92-98-04
Челябинск (351)202-03-61
Череповец (8202)49-02-64
Ярославль (4852)69-52-93

Единый адрес для всех регионов: pcn@nt-rt.ru || www.prelectronics.nt-rt.ru

